

CRACKS

Craze Lines



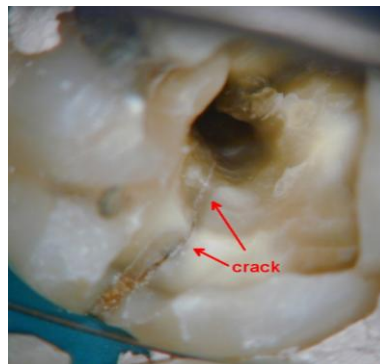
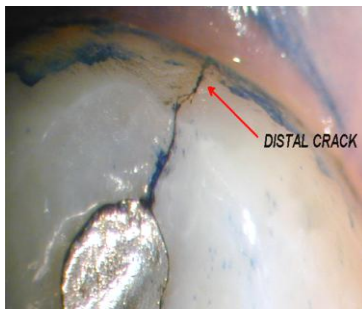
Craze lines are tiny cracks that affect only the outer enamel. Craze lines are very shallow, cause no pain, and are of no concern beyond appearances.

Fractured Cusp



When a cusp (the pointed part of the chewing surface) becomes weakened, a fracture sometimes results.

Cracked Tooth



This crack extends from the chewing surface of the tooth vertically towards the root. Damage to the pulp is common. Root canal treatment is frequently needed. Your dentist will then restore your tooth with a full crown to bind and protect the cracked tooth. At times, the crack may extend below the gum line, requiring extraction.

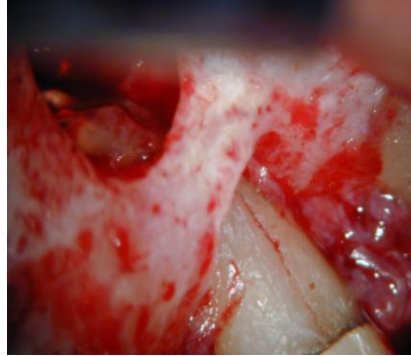
Split Tooth



A split tooth is often the result of the long term progression of a cracked tooth. Usually the tooth cannot be saved.

CRACKS

Vertical Root Fracture



Vertical root fractures are cracks that begin in the root of the tooth and extend toward the chewing surface. Treatment usually involves extraction of the tooth.